

# Internet Explorer 7 Fix

## Internet Explorer Settings

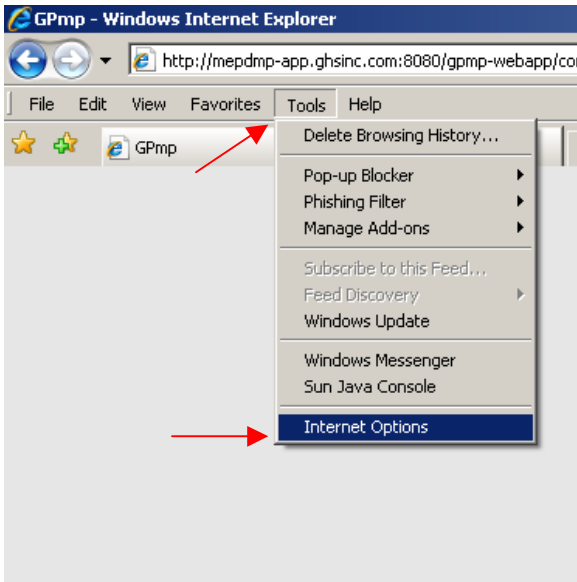


Figure 1

Click Tools -> Internet Options (Figure 1)

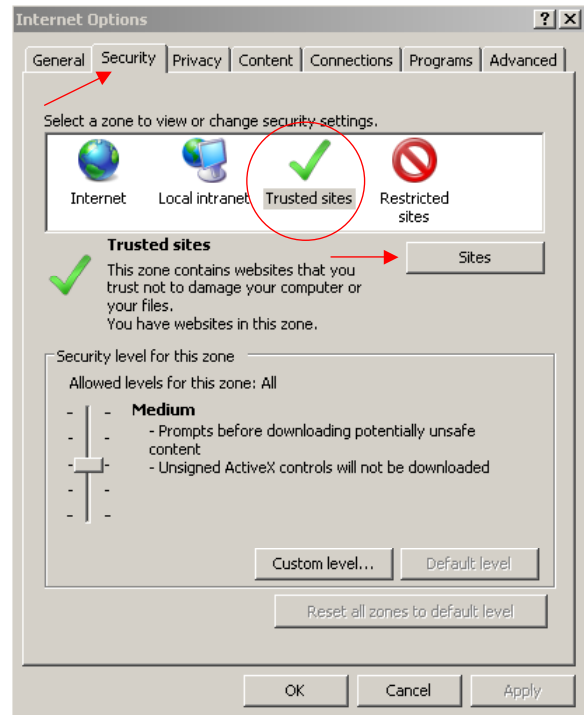


Figure 2

Click on the 'Security' tab. Click on the 'Trusted Sites' icon. Click on the 'Sites' button (Figure 2)

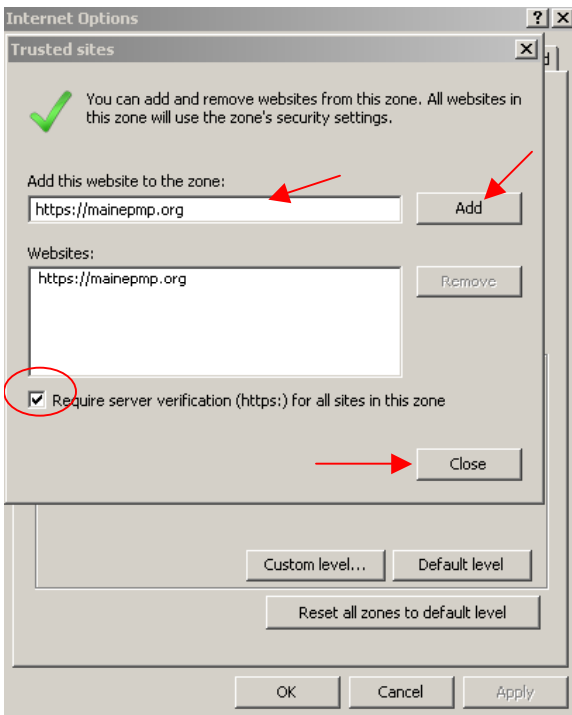


Figure 3

Type the name of the site in the box: <https://mainepmp.org>. Check mark the box "Require Server Verification". Click the 'Add' button. Click 'Close'. (Figure 3)

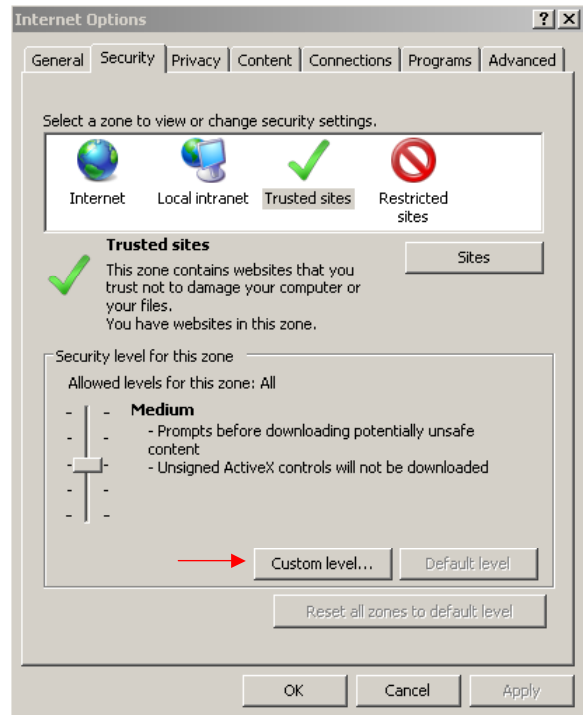


Figure 4

Click on the 'Custom Level' button (Figure 4)

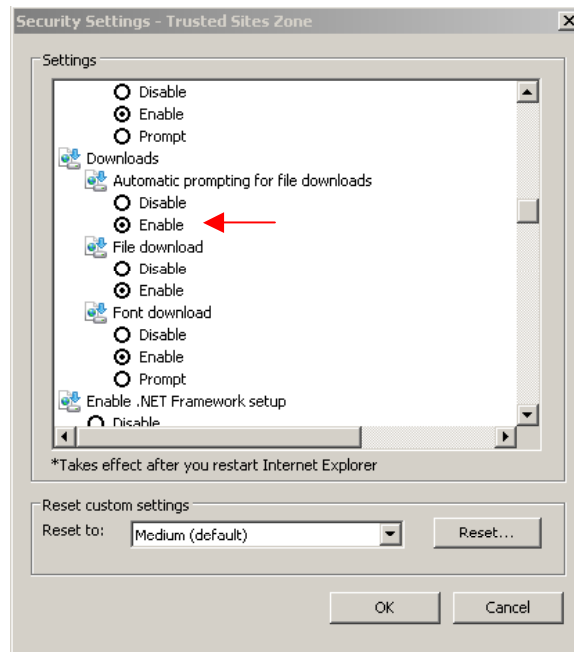


Figure 5

Under the Downloads Section, set the 'Automatic Prompting for File Downloads' Property to Enabled. (Figure 5) Click OK, and then close all instances of Internet Explorer for the change to commit.

### ***Same procedure as above (Summary)***

1. Click **Tools**
2. Select **Internet Options**
3. Click the **Security** tab
4. Click on the **Trusted Sites** icon
5. Click on the **Sites** button
6. Type the name of the site in the box: <https://mainepmp.org>
7. Check mark the box **Require Server Verification**
8. Click the **Add** button
9. Click on the **Security Tab**
10. Click the **Custom Level** button
11. Click **Close**
12. Click the **Custom Level** button
13. Under the Downloads Section, set the **Automatic Prompting for File Downloads** property to "Enabled."
14. Click **OK**
15. Close all instances of Internet Explorer for the change to commit.

## Accessing Patient History Reports – IE 7

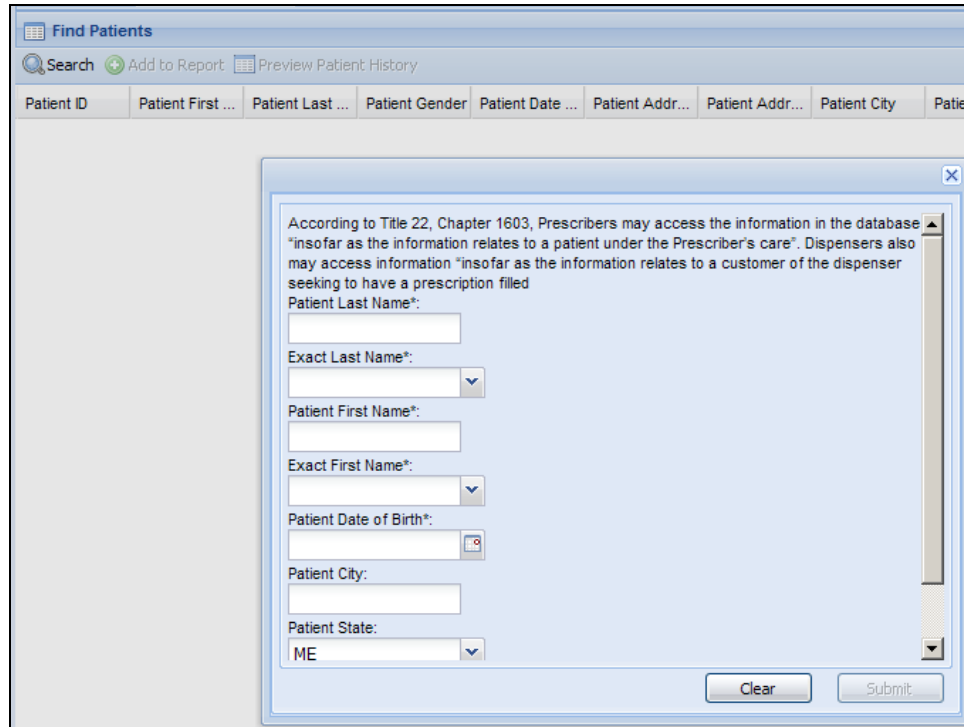


Figure 6

Search for Patients as you would normally in the 'Find Patients' search feature. (Figure 6)

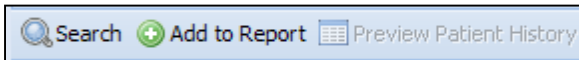


Figure 7

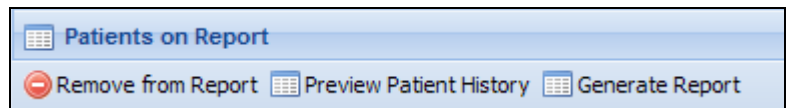


Figure 8

Select the patients you would like to include in the report and click 'Add to Report' (Figure 7)

Click 'Generate Report' to create the Patient History Report. (Figure 8)

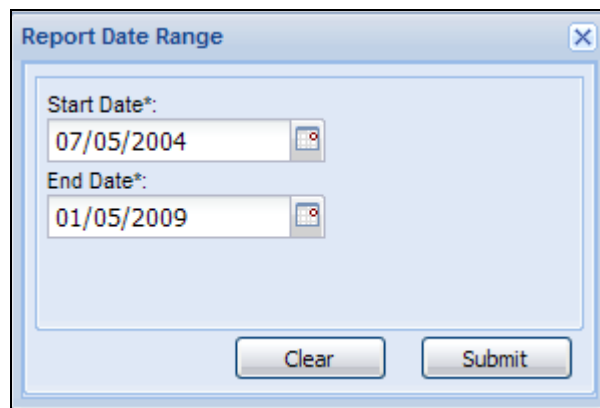


Figure 9

Select the date range for the data that will be included in the Patient History report. (Figure 9)

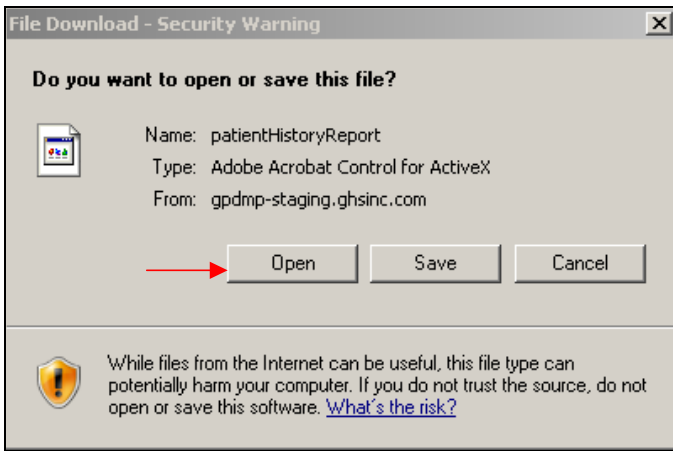


Figure 10

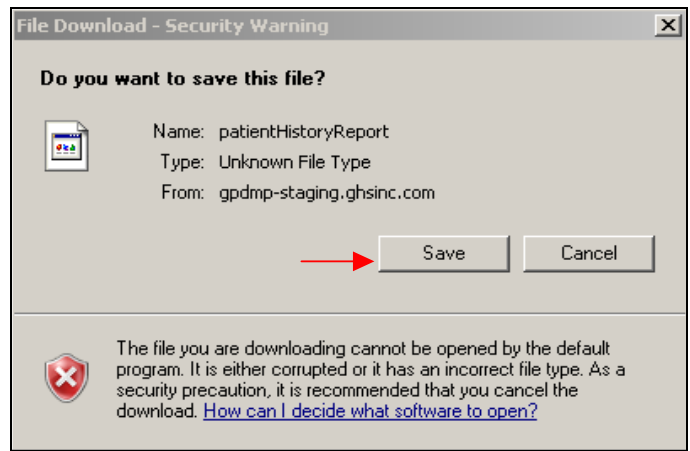


Figure 11

A File Download message will prompt you to open or save the report. Click on 'Open'. (Figure 10)

Click 'Save' when prompted again. (Figure 11)

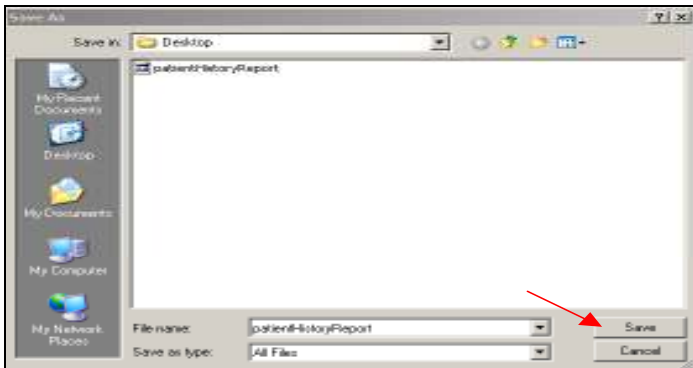


Figure 12

In the Save dialog box, leave all defaults and Click 'Save' (Figure 12)



Figure 13

If prompted to replace existing file, select 'Yes'. (You may not be prompted). (Figure 13)

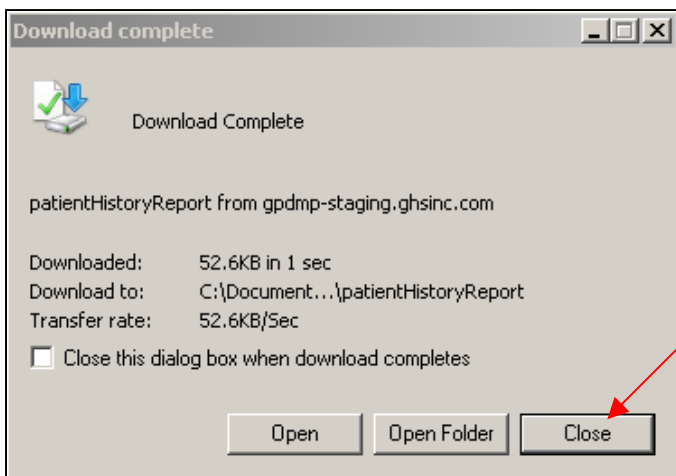


Figure 14

If the Download status box does not close automatically, click 'Close'. (Figure 14)

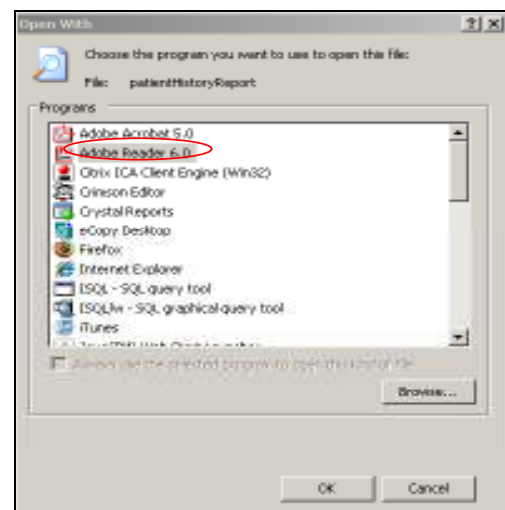


Figure 15

Select 'Acrobat Reader' to open the report. Click 'OK'. (Figure 15) The report will open in Acrobat Reader.